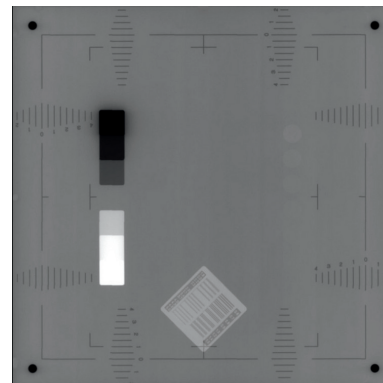
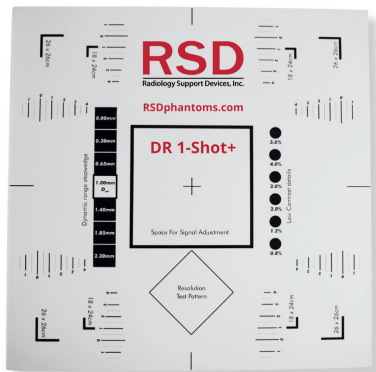


RSD

Radiology Support Devices, Inc.

DR 1-Shot+



ADVANCED QA FOR DIGITAL RADIOGRAPHY SYSTEMS IN JUST ONE SHOT

The DR 1-Shot+ is a specialized tool designed for quality assurance in digital radiography systems. Engineered to meet the demanding needs of modern digital radiographic imaging, this phantom ensures consistent performance, precise calibration, and compliance with industry standards. With DR 1-Shot+, ensure your digital radiography systems deliver the clarity and precision needed for confident diagnosis.

Product Features & Benefits

Enhanced Image Quality: Verifies system performance to maintain high diagnostic accuracy

Comprehensive Testing: Facilitates evaluation of resolution, contrast, homogeneity, and dose performance

Clear Positioning Markers: Includes precise alignment aids to streamline setup and testing

Compact and Lightweight: Portable design for easy transport between testing locations

Efficient Workflow: Simplifies routine QA processes, reducing downtime and technician effort

Regulatory Compliance: Supports adherence to QA standards, ensuring operational readiness and accreditation requirements

Cost-Effective Maintenance: Identifies performance deviations early, preventing costly repairs and minimizing interruptions

Standards Compliance

IEC 61223-3-1: Evaluation and routine testing in medical imaging departments - Part 3-1: Acceptance tests - Imaging performance of X-ray equipment for radiographic and radioscopy systems | **DIN 6868-58** | **DIN 6868-13**

Specifications

- Dimensions: 310 mm x 310 mm x 12 mm
- Cu Plate between PMMA layers
- *Custom FOV sizes available upon request*

Accessories

- Comprehensive Product Manual
- Sturdy Carrying Case

Model Number

QA-FDR040: DR1-Shot+



RSDphantoms.com

Call: 310-518-0527