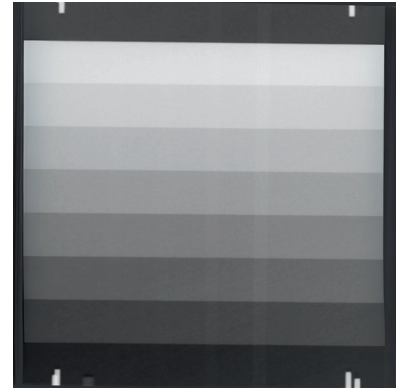


RSD

Radiology Support Devices, Inc.

DSA QA Phantom



DIGITAL SUBTRACTION ANGIOGRAPHY (DSA) QUALITY ASSURANCE TOOL

Perfect for routine quality assurance and in-depth digital subtraction angiography analysis, RSD's DSA QA Phantom helps guarantee optimal system performance and reliability. Ensure the angiography system operates at peak performance, producing accurate, clear, and reliable images essential for diagnosing vascular conditions.

Product Features & Benefits

Accurate Evaluation of DSA Systems: Ensures reliable testing of dynamic range, artifacts, contrast media sensitivity, and logarithmic errors

Dynamic Copper Step-Wedge: Provides precise dynamic range testing with copper steps from 0.20 to 1.40 mm

Moving Pneumatic Plate: Allows for accurate simulation of different blood vessel sizes using a set of four aluminum strips (0.05, 0.1, 0.2, and 0.4 mm) with 99.5% purity

Pneumatic Pump: Facilitates smooth movement of the PMMA plate for consistent simulation

Simulation of Realistic Blood Vessels: Allows precise simulation of varying blood vessel thicknesses for realistic performance testing

Standards Compliance

DIN 6868-54 | DIN 6868-8 | DIN 6868-4: Image quality assurance in diagnostic X-ray departments - Part 4: Constancy testing of medical X-ray equipment for projection radiography with digital image receiver systems and fluoroscopy

Specifications

- Cu Step Wedge with steps ranging from 0.2 to 1.4 mm
- Pneumatic PMMA Plate with four 99.5% pure aluminum strips ranging from 0.05, 0.1, 0.2, and 0.4 mm
- Pneumatic Pump

Accessories

- Comprehensive Product Manual
- Sturdy Carrying Case

Model Number

QA-FDR070: DSA QA Phantom



RSDphantoms.com
Call: 310-518-0527