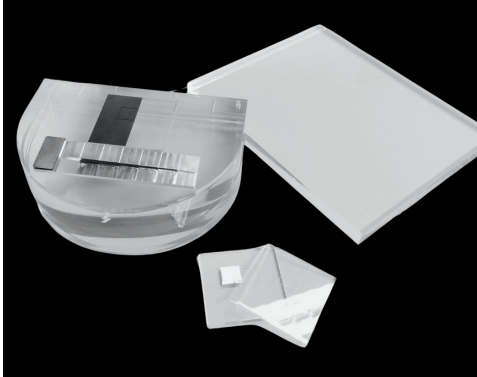


RSD

Radiology Support Devices, Inc.

PAS Mammo QA Phantom



RELIABLE QUALITY ASSURANCE FOR DIGITAL MAMMOGRAPHY SYSTEMS

The PAS Mammo QA Phantom is an essential tool for routine quality assurance of digital mammography systems. Designed for consistent evaluation, it enables imaging facilities to establish baseline measurements and monitor changes over time. Any deviations from the baseline may signal potential deterioration in imaging performance, ensuring timely corrective action.

Product Features & Benefits

Comprehensive Testing: Evaluate critical parameters such as contrast-to-noise ratio (CNR), high contrast, and missed tissue detection

Baseline Monitoring: Allows establishment of consistent baselines for routine quality control and performance tracking

Realistic Simulation: Includes test inserts and steel balls for thorough assessment of imaging accuracy, including missed tissue near the chest wall

Customizable Evaluation: Equipped with multiple inserts and attenuator plates for flexible and detailed testing procedures

Standards Compliance

PAS 1054: Requirements and testing of digital mammographic X-ray equipment

Specifications

- Dimensions: 240 mm Diameter (Semi-Circle) x 40 mm
- Aluminum Step Wedge: 14 steps ranging from 0 to 5.20 mm
- Structure Plate: 6 mm Thickness with recessed areas to accommodate test inserts
- Steel Ball Markers: Strategically placed for detecting missed tissue near the chest wall
- PMMA Test Insert: Defined region of interest (ROI) for accurate imaging evaluation
- High-Contrast Test Insert: 50% PMMA surface and 50% steel surface for contrast assessment
- CNR Test Insert: 0.10 mm Al Square for CNR measurements
- Two Attenuator Plates (Each): 10 mm and 20 mm Thickness

Accessories

- Comprehensive Product Manual
- Sturdy Carrying Case

Model Number

QA-MAM060: PAS Mammo QA Phantom



RSDphantoms.com

Call: 310-518-0527