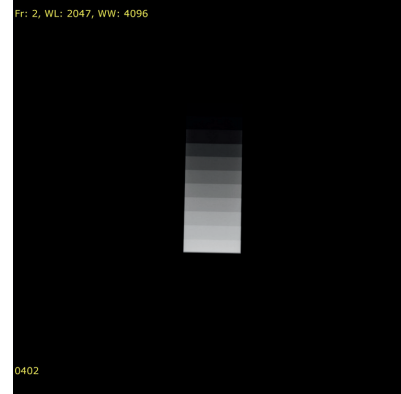
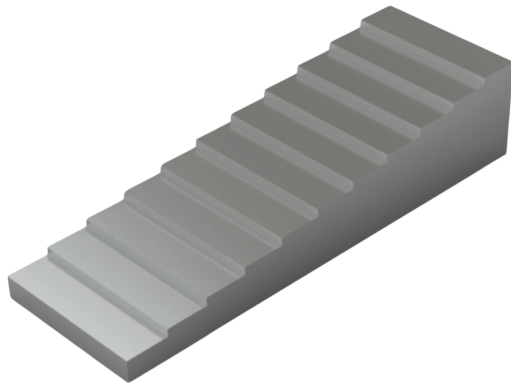


RSD

Radiology Support Devices, Inc.

Fluoro/DR Al Step Wedges



11- and 21-STEP WEDGES FOR FLUOROSCOPY & DIGITAL RADIOGRAPHY

Crafted from the highest purity aluminum, RSD's Fluoro/DR Aluminum Step Wedges provide a reliable and consistent method for evaluating the performance of radiography and fluoroscopy systems, including both dynamic and film screen systems. Fluoro/DR Aluminum Step Wedges provide the precision and reliability you need for comprehensive evaluation and optimization of imaging systems.

Product Features & Benefits

High-Purity Aluminum: Constructed with 99.5% pure aluminum to ensure consistent and accurate attenuation properties for reliable imaging evaluations

Comprehensive System Testing: Designed to assess a wide range of imaging parameters for radiography and fluoroscopy systems, including dynamic and film-screen configurations

11- and 21-Step Configurations: Multiple step options provide flexibility for evaluating contrast resolution, dynamic range, and image quality across various imaging conditions

Precision Fabrication: Uniform step thickness ensures consistent attenuation and repeatable testing results for accurate quality assessments

Versatile Applications: Suitable for routine quality assurance, system calibration, and research purposes across a variety of imaging modalities

Standards Compliance

IEC 61223-3-1: Evaluation and routine testing in medical imaging departments - Part 3-1: Acceptance tests - Imaging performance of X-ray equipment for radiographic and radioscopy systems

Specifications

- 11-Step Dimensions: 230 mm x 110 mm x 30.5 mm
- 21-Step Dimensions: 230 mm x 60 mm x 20 mm
- Steps range from 3 mm to 12 mm high
- *Custom dimensions available upon request*

Model Numbers

QA-FDR110: Fluoro/DR Al 21-Step Wedge

QA-FDR111: Fluoro/DR Al 11-Step Wedge



RSDphantoms.com

Call: 310-518-0527