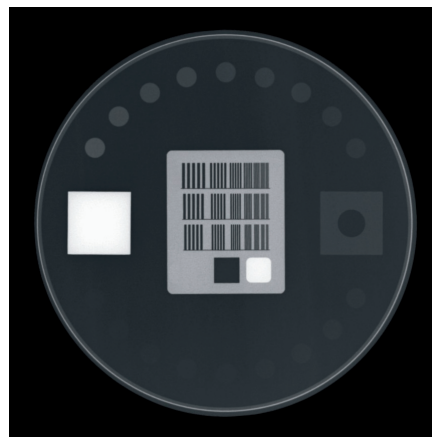
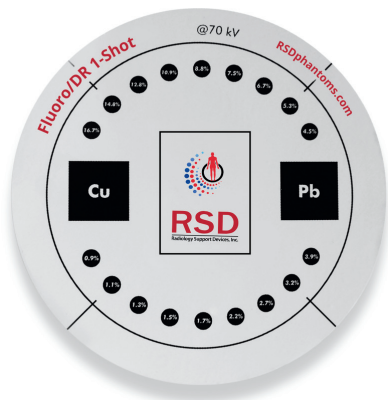


# RSD

Radiology Support Devices, Inc.

# Fluoro/DR 1-Shot



## QA FOR FLUOROSCOPY & DIGITAL RADIOGRAPHY SYSTEMS IN JUST ONE SHOT

The Fluoro/DR 1-Shot is an essential tool for ensuring the quality and consistency of your fluoroscopy and tomography imaging systems. Designed for routine testing, it provides a comprehensive evaluation of image quality parameters, helping to identify performance variations and ensure optimal system functionality.

### Product Features & Benefits

**Comprehensive Evaluation:** Allows testing of resolution, contrast, homogeneity, and dose accuracy in one device

**Precision Indicators:** Includes detailed markings for accurate measurement of system alignment

**Streamlined QA:** Simplifies routine quality assurance procedures, saving time and resources

**Improved Diagnostic Accuracy:** Ensures imaging systems deliver consistent, high-quality results, reducing diagnostic errors

**Regulatory Compliance:** Supports compliance with industry standards for radiography and fluoroscopy QA

**Cost-Effective Solution:** Minimizes downtime and maintenance costs by identifying performance issues early

### Model Number

**QA-FDR020:** Fluoro/DR 1-Shot

### Standards Compliance

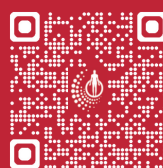
**IEC 61223-3-1:** Evaluation and routine testing in medical imaging departments - Part 3-1: Acceptance tests - Imaging performance of X-ray equipment for radiographic and radioscopy systems | **DIN 6868-150:** Image quality assurance in diagnostic X-ray departments - Part 150: Acceptance test of medical radiographic and fluoroscopic X-ray equipment

### Specifications

- Dimensions: 300 mm x 300 mm x 19 mm
- 0.05 mm tolerance
- *Custom FOV sizes available upon request*

### Accessories

- Comprehensive Product Manual
- Sturdy Carrying Case



**RSDphantoms.com**

**Call: 310-518-0527**