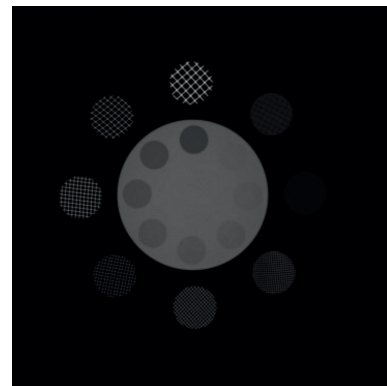
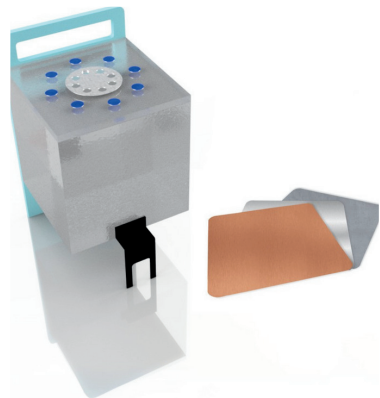


RSD

Radiology Support Devices, Inc.

CDRH QA Phantom



MEETS CDRH TESTING REQUIREMENTS FOR SYSTEM SAFETY & PERFORMANCE

The Center for Devices and Radiological Health (CDRH) QA Phantom is a robust quality assurance tool designed to meet the demanding needs of radiography and fluoroscopy system testing. Engineered for precision and compliance with industry standards, this phantom supports comprehensive evaluation and maintenance of imaging systems.

Product Features & Benefits

Standard Compliance: Aligns with CDRH testing requirements to ensure system safety and performance

Versatile Design: Suitable for a wide range of fluoroscopy and radiography systems

Comprehensive QA Testing: Facilitates the assessment of image quality, dose accuracy, spatial resolution, and contrast sensitivity

Integrated Test Patterns: Built-in patterns for evaluating field alignment, beam centering, and geometric distortion

Optimized Imaging Performance: Ensures systems deliver reliable, high-quality diagnostic images

Cost-Effective Solution: Detects system issues early to minimize downtime and repair expenses

Model Number

QA-FDR060: CDRH QA Phantom

Standards Compliance

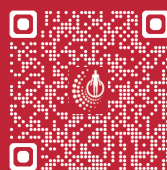
NEXT Protocol for 2003 Survey of Fluoroscopic X-Ray Systems | IEC 61223-3-1: Evaluation and routine testing in medical imaging departments - Part 3-1: Acceptance tests - Imaging performance of X-ray equipment for radiographic and radioscopy systems | **AAPM Report No. 60:** Instrumentation Requirements of Diagnostic Radiological Physicists

Specifications

- Dimensions: 180 mm x 180 mm x 10 mm
- Attenuation Filters
- Res-Mesh

Accessories

- Comprehensive Product Manual
- Sturdy Carrying Case
- Fixed Probe Stand



RSDphantoms.com

Call: 310-518-0527