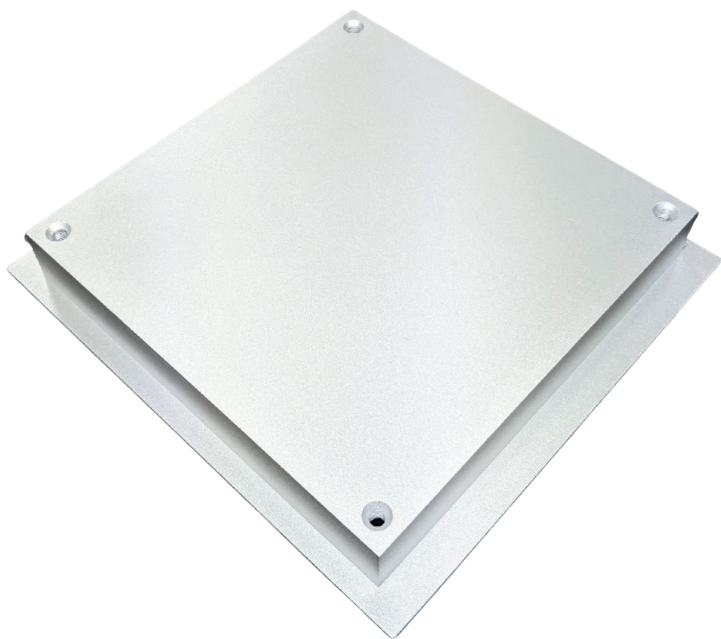


RSD

Radiology Support Devices, Inc.

Aluminum Attenuator



Product Features & Benefits

Enhanced Diagnostic Reliability: Provides consistent, accurate performance evaluations to ensure high imaging quality

Patient-Equivalent Design: Simulates human tissue attenuation for realistic performance evaluations

High-Quality Construction: Made from precision-engineered aluminum for durability and accuracy

Customizable Configurations: Available in various designs and field-of-view (FOV) sizes to suit specific testing requirements

Portable and Convenient: Includes a robust carrying case for effortless transport and storage

PATIENT EQUIVALENT TESTING FOR RADIOGRAPHY IMAGING SYSTEMS

RSD's high-purity Aluminum (Al) Attenuator is a reliable and durable solution for evaluating the performance of general radiography imaging systems. Engineered to simulate patient-equivalent attenuation, this tool ensures consistent and accurate testing results. Its robust construction and compliance with international standards make it an essential addition to your quality assurance toolkit. Ensure the accuracy and reliability of your imaging systems with our Al Attenuator, designed for precision, performance, and ease of use.

Standards Compliance

IEC 61223-3-1: Evaluation and routine testing in medical imaging departments - Part 3-1: Acceptance tests - Imaging performance of X-ray equipment for radiographic and radioscopy systems

Specifications

- Block Dimensions: 153 mm x 153 mm x 21 mm
- Plate Dimensions: 168 mm x 175 mm x 2 mm
- *Custom dimensions and FOV sizes available upon request*

Model Number

QA-AT010: Aluminum Attenuator



RSDphantoms.com

Call: 310-518-0527